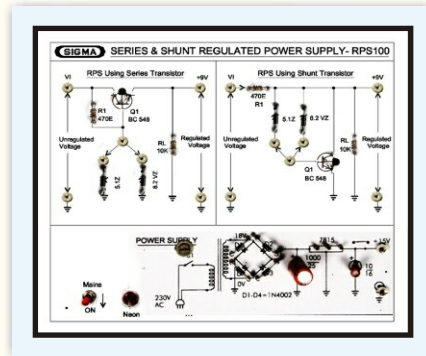




# RPS USING SERIES & SHUNT TRANSISTOR

## MODEL RPS04-05

This trainer has been designed with a view to provide practical and experimental knowledge of Series and Shunt Regulated Power supplies.



### SPECIFICATIONS

1. Power supply requirement : 230V AC, 50 Hz.
2. Following parts provided on Single PCB with connecting terminals.  
Transistor - BC548B/2N3904 - 2 Nos.
3. Mains Transformer with AC Voltages : 0-15/250 mA.
4. Accessories : 2 mm patch cord
5. Experiments :
  1. To understand Series and Shunt Regulated Power supplies.
  2. To construct Series Regulated Power supply and observe its characteristics.
  3. To construct Shunt Regulated Power supply and observe its characteristics.

In keeping view of SIGMA policy of continuous development and improvement, the Specifications may be changed without prior notice or obligation.

**Sigma Trainers**  
E-103, Jai Ambe Nagar,  
Near Udgam School, Thaltej,  
AHMEDABAD - 380054.

**Phone** : 079-26852427 / 26767512  
**Fax** : 079-26840290 / 26759661  
**ISDN** : 079-26859162 / 26853758  
**Email** : sales@sigmatrainers.com  
: sigmatrainers@sify.com  
**Web** : www.sigmatrainers.com

**Dealer:-**