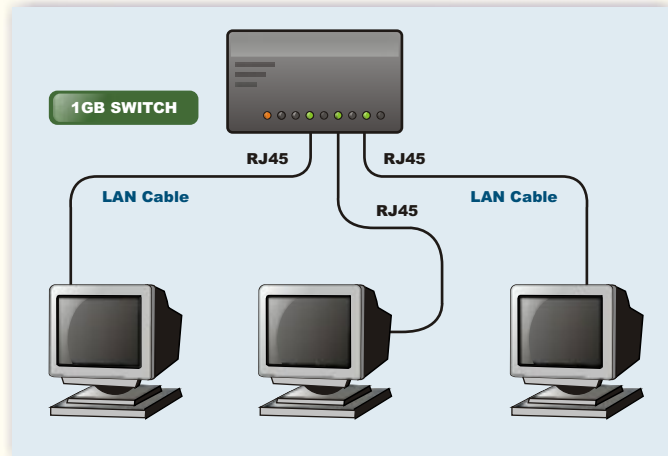




GIGABIT ETHERNET NETWORKING

MODEL - LAN100GIGA

This trainer provides training of hardware and software theory of Local Area Networking of Computers. This trainer is based on syllabus of MCSE - (Microsoft Certified Software Engineer)



SPECIFICATIONS

(A) Computer Systems - Optional (One Server & Two Client's)

- | | | |
|-------------------------|---|-----------------------------|
| 1. CPU with fan | : | Intel Pentium IV 3 GHz |
| 2. Mother Board | : | 400 MHZ FSB |
| 3. Memory (RAM) | : | 128 MB SDRAM |
| 4. Display Adaptor card | : | On Board AGP 8 MB |
| 5. Hard Disk | : | 80 GB ATA |
| 6. Floppy Disk Drive | : | 1.44 MB |
| 7. Monitor | : | 15" Colour SVGA |
| 8. Key board | : | 104 Keys Keyboard |
| 9. Mouse | : | Logitech 1st Mouse with pad |
| 10. SMPS | : | 200 Watts AT |

(B) LAN Hardware

- | | | |
|----------------------------------|---|-----------------------------------|
| 1. 10/100/1GB Mbps Ethernet Card | : | 3 Nos. |
| 2. UTP Cables with connectors | : | 10 Mtrs x 2 Nos + 3 Mtrs x 1 Nos. |
| 3. 10/100 Mbps 8 Port Hub | : | 1 Nos. |
| 4. Null modem COM1 Cable | : | 1 Nos. |
| 5. LapLink Cable LPT1 | : | 1 Nos. |

In keeping view of SIGMA policy of continuous development and improvement, the Specifications may be changed without prior notice or obligation.

Sigma Trainers and Kits
E-113, Jai Ambe Nagar,
Near Udgam School,
Thaltej,
AHMEDABAD - 380054.
INDIA.

Phone(O): +91-79-26852427/ 26850829
Phone(F): +91-79-26767512/ 26767648
Fax : +91-79-26840290/ 26840290
Mobile : +91-9824001168
Email : sales@sigmatrainers.com
: sigmatrainers@sify.com
Web : www.sigmatrainers.com

Dealer:-