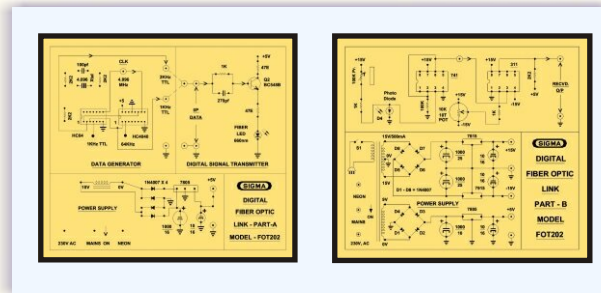




FIBER OPTIC DIGITAL LINK

MODEL - FOT102A

This trainer has been designed with a view to provide practical & experimental knowledge of Fiber optic digital link.



SPECIFICATIONS

1. Power supply requirement : 230V AC, 50 Hz.
2. Built in IC based power supply.
3. Transmitter Board : Fiber Optic LED - 660nm
Data Rate : 1.2 MHz max..
4. Receiver Board : Fiber Optic Avalanche Photo diode (APD).
DC Coupled TTL type
Data Rate : 1.2 MHz max..
5. All parts are soldered on two single PCB of size 8" x 7" with complete circuit diagram screen printed.
6. Standard Accessories : 1. A Training Manual
2. Connecting Patch cords.

EXPERIMENTS

1. To transmit digital frequency signal through Fiber optic LED.
2. To receive digital frequency signal through photo diode detector.

In keeping view of SIGMA policy of continuous development and improvement, the Specifications may be changed without prior notice or obligation.

Sigma Trainers and Kits
E-113, Jai Ambe Nagar,
Near Udgam School,
Thaltej,
AHMEDABAD - 380054.
INDIA.

Phone(O): +91-79-26852427/ 26850829
Phone(F): +91-79-26767512/ 26767648
Fax : +91-79-26840290/ 26840290
Mobile : +91-9824001168
Email : sales@sigmatrainers.com
: sigmatrainers@sify.com
Web : www.sigmatrainers.com

Dealer:-