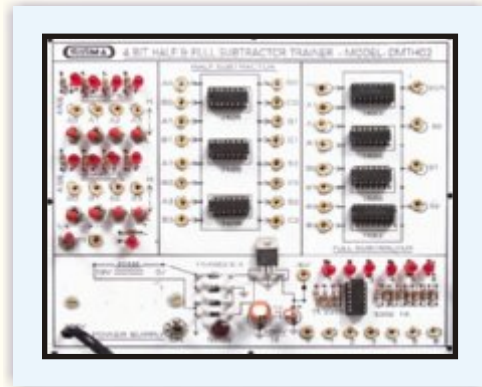




4 BIT HALF & FULL ADDER AND SUBTRACTOR MODEL - DMTH06

This trainer has been designed with a view to provide practical and experimental knowledge of half and Full adder & Subtractor



SPECIFICATIONS

1. Power supply requirement : 230V AC, 50 Hz.
2. Built in IC based regulated Power supply +5 V DC/200 mA.
3. Following parts provided on Single PCB with connecting terminals.
Half Adder - IC 7486 - 1 No., IC 7408 - 1 No.
Full Adder - IC 7483 - 1 No.
Half Subtractor - IC 7404 - 1 No., IC 7486 - 1 No., And IC 7408 - 1 No.
Full Subtractor - IC 7483 - 2 Nos., IC 7486 - 2 Nos.
4. High /Low switches : 10 Nos provided to apply 0 and 1 level
5. Logic output Indicators : 6 LEDs provided for output level indication.
6. Standard Accessories : User Manual with practical and circuit diagrams.
Connecting patch cords

In keeping view of SIGMA policy of continuous development and improvement, the Specifications may be changed without prior notice or obligation.

Sigma Trainers
E-103, Jai Ambe Nagar,
Near Udgam School, Thaltej,
AHMEDABAD - 380054.

Phone : 079-26852427 / 26767512
Fax : 079-26840290 / 26759661
ISDN : 079-26859162 / 26853758
Email : sales@sigmatrainers.com
: sigmatrainers@sify.com
Web : www.sigmatrainers.com

Dealer:-