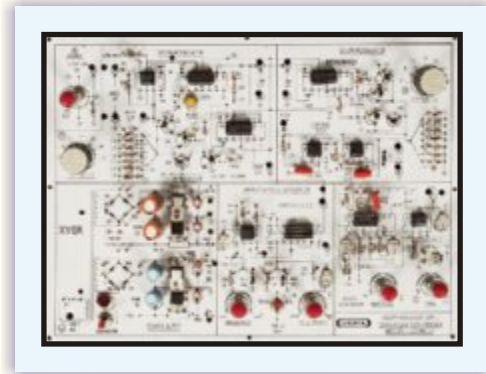




# SIGMA - DELTA MODULATION DEMODULATION TRAINER

## MODEL - COM112

This trainer has been designed with a view to provide practical and experimental knowledge of Sigma-Delta Modulation /Demodulation technique on a SINGLE P.C.B.



### SPECIFICATIONS

1. Power supply requirement : 230V AC, 50 Hz.
2. Built in IC based power supply.
3. On Board AF Modulating signal generator - Sine wave  
Frequency Range : 300 Hz to 3.4KHz  
Amplitude : 0 to 5 Vpp.
4. On Board Sampling Pulse signal generator.  
Frequency Range : 10 KHz to 1 Mhz.  
Pulse width : Variable.
5. Built in variable DC power supply (0 to  $\pm 5V$ ) to see the effect of DC on the output waveform.
6. Modulator Sections : Adder, Comparator, S/H and Integrator.
7. Demodulator Sections : Integrator & Low Pass Filter -  
Cut off fre. - 3.4 KHz.
8. All parts are soldered on single PCB with complete circuit diagram screen-printed.
9. Standard Accessories :
  1. A Training Manual.
  2. Connecting Patch cords.

### EXPERIMENTS

1. To study theory of Sigma-delta modulation & demodulation
2. To generate SDM signal by modulating with Audio signal generator
3. To demodulate SDM signal using low pass filter.

In keeping view of SIGMA policy of continuous development and improvement, the Specifications may be changed without prior notice or obligation.

**Sigma Trainers and Kits**  
E-113, Jai Ambe Nagar,  
Near Udgam School,  
Thaltej,  
AHMEDABAD - 380054.  
INDIA.

**Phone(O): +91-79-26852427/ 26850829**  
**Phone(F): +91-79-26767512/ 26767648**  
**Fax : +91-79-26840290/ 26840290**  
**Mobile : +91-9824001168**  
**Email : sales@sigmatrainers.com**  
**: sigmatrainers@sify.com**  
**Web : www.sigmatrainers.com**

**Dealer:-**