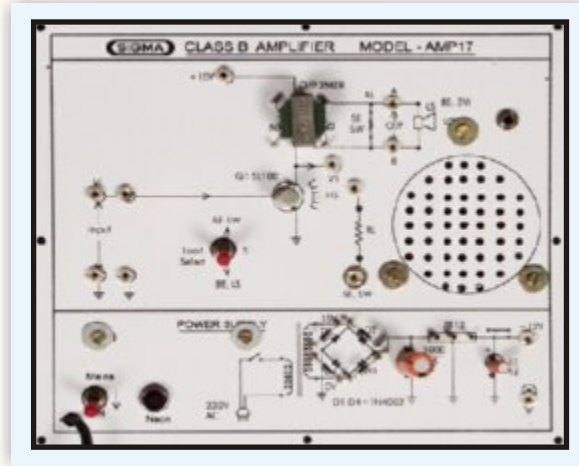




CLASS-B POWER AMPLIFIER

MODEL AMP17

This trainer has been designed with a view to provide practical and experimental knowledge of Class-B Power Amplifier.



SPECIFICATIONS

1. The complete circuit is printed on a single P.C.B.
2. All parts are soldered on single pin tag for easy replacement.
3. Explanation, Observation, Alignment and adjustment of Internal and external controls is possible due to Single P.C.B.
4. Easy identification of different parts is possible at a glance.
5. Easy measurement of voltages and observation of waveforms at any point. Test Points are provided on P.C.B.
6. A manual having practical detail is provided with the board.
7. Built-in Power supply : +12V at 30mA/6V DC 200mA IC Regulated & short circuit protected continuously variable.
8. Power requirement : 230V, 50Hz AC.
9. Standard Accessories :
 1. A manual having practical details.
 2. Patch Cords.
10. Power transistor AC128 - 2 Nos. in Class-B Power amplifier circuit
11. 8 Ohm 0.5 Watt Loud Speakers
12. Standard Accessories:
 1. User Manual with practical and circuit diagrams.
 2. Connecting patch cords - 5 nos.
13. Experiments: -
 1. To demonstrate the operation of Class B Power Amplifier.
 2. To observe Overload Characteristics of Amplifier.
 3. To plot the frequency response of amplifier.
 4. To measure output power.
 5. To study Distortion Measurement.

In keeping view of SIGMA policy of continuous development and improvement, the Specifications may be changed without prior notice or obligation.

Sigma Trainers
E-103, Jai Ambe Nagar,
Near Udgam School, Thaltej,
AHMEDABAD - 380054.

Phone : 079-26852427 / 26767512
Fax : 079-26840290 / 26759661
ISDN : 079-26859162 / 26853758
Email : sales@sigmatrainers.com
: sigmatrainers@sify.com
Web : www.sigmatrainers.com

Dealer:-